



**THE AMERICAN LITERARY
TRANSLATORS ASSOCIATION**

WWW.LITERARYTRANSLATORS.ORG

ALTA 2015 ANNUAL REPORT

**The American Literary Translators
Association provides support,
community, resources, and advocacy
for literary translators, authors,
teachers, publishers, editors, and other
arts professionals working in the field
of literary translation.**



CONTENTS

From the Executive Director

Programs

ALTA38: Translation & Traffic
2015 Awards Overview

Supporters

Members
Donors
Sponsors

Organizational

Board & Committees
FY15 Budget

From the Executive Director

The ALTA community is unique in many ways, not least because of its great diversity. Our community is a truly global community: one that is intimately aware of how connected we are to one another. A community deeply committed to the importance of culture to create empathy, understanding, and informed engagement with our globalized world.

This year we saw our community of conference attendees grow: at ALTA38 in Tucson we were joined by a record 373 attendees, participating in and attending more than 50 panels. We had record participation in the enormously popular Bilingual Readings Series, and for the first time in recent history opened our doors to the local community for several readings and our Friday night keynote presentation by Jerome Rothenberg. Recordings of some sessions, including the phenomenal ALTA Fellows Reading and the exceptional Closing Event presentations by Mario Bellatín and Valeria Luiselli, are available online: <http://tiny.cc/alta38videos>.

We're also making ALTA history by expanding our membership community, introducing a new level of membership starting in 2016: Friend of Translation. Friends of ALTA may be readers, editors, publishers, reviewers, or supporters of literary translation and world literature in English. Friends receive digital subscriptions to *Translation Review* and *World Literature Today* as well as access to other members-only content on our website. **We invite you to help us spread the word, and invite your friends and colleagues to help support ALTA in 2016 by becoming a Friend of Translation.**

Of course, we rely on the continued support of our membership to continue operating. You can also renew and contribute through ALTA's website: www.literarytranslators.org.

The annual conference continues to be our most important program, and we're delighted to be planning several years ahead under the tireless leadership of conference committee chair Chad Post. We hope to see you in 2016 in Oakland, CA (Thursday Oct. 6 - Sunday Oct. 9) for **ALTA39: Translation & Crossings**, with thanks in advance to our local hosts Diana Thow and Barbara Paschke. In 2017 we'll be celebrating ALTA's 40th anniversary in Minneapolis, MN; and in 2018 we'll be making our association's second trip to Austin, TX thanks to local host Marian Schwartz.

Our hard-working board makes possible much of this growth, and so I would like to thank outgoing treasurer Sergio Waisman and program committee chair Sandra Kingery, and welcome our new treasurer Paul Daw and new at-large board member Ellen Elias-Bursac, and announce that Allison Charette will be taking over as program committee chair.

We have made history this year more than once for our association. We continue to grow in new and exciting directions. And we continue to expand our borders as a community. Without support from our members, we wouldn't have the resources available to ensure our growth and success. Thank you for your membership, and for your ongoing support.

As always, your comments, questions, and suggestions are most welcome. Please feel free to contact me at erica@literarytranslators.org or at 415-735-4546.

Sincerely,

Erica Mena

Executive Director

American Literary Translators Association

ALTA38: TRANSLATION & TRAFFIC

Oct. 28-31, 2015; Tucson, AZ

In 2015 we welcomed 373 translators, editors, students, professors, readers and publishers to the ALTA conference, of whom 100 were students, and 119 were first-time attendees. That represents 45% overall increase in conference attendance of since 2013.

Adding to our support for emerging translators this year, thanks to the efforts of program committee chair Allison Charette, we piloted a year-long **Emerging Translators Mentorship Program**. With support from the Institut Ramon Llull, the Book Office of the French Embassy, and the Polish Cultural Institute New York, we matched emerging translators **Scott Shanahan** working from Catalan with Ronald Puppò; **Joyce Zonana** working from French with Alyson Waters; and **Anna Zaranko** working from Polish with Bill Johnston to complete book-length translations.

Thanks to the support of an anonymous donor, we inaugurated this year the **Italian Prose in Translation Award (IPTA)**, judged by Diana Thow, Susan Harris, and Paul Vangelisti, and awarded to translator **Anne Milano Appel** for her book *Blindly* by Claudio Magris (Yale University Press, 2012). This year's **National Translation Award** was given out in two categories for the first time. The NTA in Poetry was judged by Stephen Kessler, Lisa Rose Bradford, and Diana Thow and awarded to **Pierre Joris** for *Breathturn into Timestead* by Paul Celan (Farrar, Straus, Giroux, 2014). The NTA in Prose was judged by Jason Grunebaum, Anne Magan-Park, and Pamela Carmell and awarded to **William Hutchins** for *New Waw, Saharan Oasis* by Ibrahim al-Koni (University of Texas Press, 2014).

This year we had five phenomenal ALTA Travel Fellows: **Clair Eder (French)**, **Anne Greeott (Italian & Spanish)**, **Audrey Hall (Spanish)**, **Christiana Hills (French)**, and **Canaan Morse (Chinese)**. The fellows gave a reading that was one of the highlights of the conference, and met as a group with mentor Steve Bradbury, as well as individually with established translators working in their language or region. Don't miss the chance to see their reading, along with the Awards Reception readings, keynotes by Jerome Rothenberg and Stephen Snyder, and selected panel sessions, online if you couldn't attend in person: <http://tiny.cc/alta38fellows>.

We had several off-site events, including a tour of The Poetry Center at the University of Arizona, and readings at local hot-spot Café Passé. Our bookfair, managed by The University of Arizona Bookstore, featured hundreds of titles from dozens of presses.

This record-breaking conference would not have been possible without the immense work of local host David Gramling, and the support of our major sponsors **The National Endowment for the Arts, The Center for the Art of Translation, The Poetry Center, Phoneme Media, AmazonCrossing, and the University of Arizona Tucson**.

The conference cost the association \$66,604 and brought in \$86,959 in sponsorships and registration fees, a difference of \$20,355, making this the first year in association records that the conference has generated revenue.

ALTA38 CONFERENCE SPONSORS

Major Sponsors

The Center for the Art of Translation
Phoneme Media
AmazonCrossing
The Poetry Center

Sponsors

BOA Editions
Burning Deck
City Lights
Coffee House Press
Intralingo
Litmus Press
Restless Books

University of Arizona, Tucson Sponsors

Department of Spanish and Portuguese
Department of German Studies
Department of East Asian Studies
Center for Middle Eastern Studies
Institute for LGBT Studies
Interdisciplinary Graduate Program in Second
Language Acquisition and Teaching
Center for Educational Resources in Culture,
Language and Literacy (CERCLL)
The Poetry Center



TRANSLATION & CROSSINGS

COMING IN 2016 . . .

39th Annual Conference
American Literary
Translators Association
Thursday–Sunday
October 6–9, 2016
Oakland, CA

Awards Overview

National Translation Award



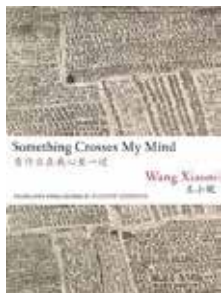
This year's **National Translation Award** was given out in two categories for the first time. Between the two awards there were 109 titles submitted from 23 languages. Submission fees earned \$4,655 toward the awards' honorariums. The [National Translation Award \(NTA\)](#), given by the American Literary Translators Association (ALTA) at the annual conference, is the oldest prize for a work of literary translation, and the only one that includes an examination of the source language.



The NTA in Poetry was judged by Stephen Kessler, Lisa Rose Bradford, and Diana Thow and awarded to **Pierre Joris** for *Breathturn into Timestead* by Paul Celan (Farrar, Straus, Giroux, 2014). The NTA in Poetry received 38 submissions of books translated from 12 languages.

The NTA in Prose was judged by Jason Grunebaum, Anne Magnan-Park, and Pamela Carmell and awarded to **William Hutchins** for *New Waw, Saharan Oasis* by Ibrahim al-Koni (University of Texas Press, 2014). The NTA in Prose received 71 submissions of books translated from 19 languages.

Lucien Stryk Asian Translation Prize



The fifth annual [Lucien Stryk Award for Asian Poetry](#) was given to translator **Eleanor Goodman** for her book *Something Crosses My Mind* by Wang Xiaoni (Zephyr Press, 2014). The judges for this year's Stryk Prize were renowned translators Lucas Klein, Janet Poole, and Stephen Snyder. The [Lucien Stryk Prize](#), awarded annually, recognizes the best translation into English of book-length texts of Asian poetry or Zen Buddhism. Founded in 2010 and named for the renowned poet and translator [Lucien Stryk](#), the award is given at the American Literary Translators Association conference.

IPTA



The **Italian Prose in Translation Award (IPTA)**, recognizes the importance of contemporary Italian prose (fiction and literary non-fiction) and promotes the translation of Italian works into English. The inaugural 2015 award was judged by Diana Thow, Susan Harris, and Stephen Vangelisti, and awarded to translator **Anne Milano Appel** for her book *Blindly* by Claudio Magris (Yale University Press, 2012). The \$5,000 Award is given at the American Literary Translators Association conference, and will be awarded annually to a translator of a recent work of Italian prose (fiction or literary non-fiction).

ALTA Travel Fellowships

Each year, ALTA provides four to six \$1,000 fellowships to emerging translators to attend the annual ALTA conference. This year ALTA received 165 applications for these fellowships, a 42% increase from 2014's record breaking 116 applications. The five [2015 Fellows](#) were selected by award-winning translators Geoffrey Brock, Sidney Wade, and Jennifer Croft. They were: **Clair Eder (French)**, **Anne Greott (Italian & Spanish)**, **Audrey Hall (Spanish)**, **Christiana Hills (French)**, and **Canaan Morse (Chinese)**.

Submissions for our 2016 awards will be [accepted online](#) from January 1 - April 8, 2016.

ALTA MEMBERS & FRIENDS

ALTA is an entirely member-supported organization. Our operating expenses are funded primarily by membership dues, and it is through the generosity of our members and other sponsors that we have been able to continue building an endowment to secure our longevity, and expand our support for literary translators and literary translation. Beginning in 2015 we will welcome non-translators into the association as **Friends of Translation**.

Membership

In 2015 we had a total of 828 members American Literary Translators Association, a 23% growth from 2014.

Supporters of ALTA

We're grateful for support from our members, and other sponsors of ALTA initiatives, awards, and programs. In the ALTA Endowment, we started the year with a balance of \$432,718 and ended with a balance of \$437,722. This reflects gifts in the amount of \$16,456, more than offsetting the 1.5% loss suffered by the investment holdings, as well as the association's first drawdown of the interest earned by the investment in the amount of \$5,000.

Friends (\$1 - \$99)

Anonymous (3)
Madeleine Campbell
Ellen Cassidy
Sarah Cyganiak
Gregory Divers
Hans Gabriel
Paula Gordon
Priscilla Hunter
Yuri Komuro
Gabriel Lahood
Erica Landry
Margarit Ordukhanyan
Deborah Rogers
Sebastian Schulman
Ellen Sprague
Christina Vega-Westhoff
Benn Williams
Khaleel Backroush Almaliki
Steve Bradbury
Dennis Dybeck
Graciela Lucero-Hammer
Christopher Lupke

Josh Rathkamp
Laurel Rodd
Barbara Goldberg
Jeremy Schwartz
Catherine Cauvin-Higgins
Sean Cotter
Sibelan Forrester
Anne Greeott
Michael Meigs
Andrea Nemeth-Newhauser
Peter Thompson
Allen Young
Madeline Levine
Barbara Paschke

Supporters (\$100 - \$499)

Anonymous (4)
Nancy Naomi Carlson
Allison Charette
María José Giménez
William Kirkland
Silvia Kofler
Ludmilla Popova-Wightman

Amy Stolls
Sergio Waisman
Marguerite Feitlowitz
Nancy Jean Ross

Sponsors (\$500 - \$999)

Anonymous (4)
Albert Bork
Andrea Labinger
Marian Schwartz
Russell Valentino
Aron Aji

Patrons (\$1000 - \$4999)

Anonymous (2)
Esther Allen
Paul Daw
Adam Sorkin

Ambassadors (\$5000 & above)

Anonymous (1)

Board & Staff

Board of Directors

Russell Valentino
President
Indiana University

Aron Aji
Vice President
University of Iowa

Paul Daw
Treasurer
Independent Translator

Sean Cotter
Secretary
The University of Texas Dallas

Gary Racz
Past President
Long Island University Brooklyn

Esther Allen
Development Committee Chair
Baruch College

Allison Charette
Program Committee Chair
Independent Translator

Ellen Elias-Bursac
At-Large
Independent Translator

Susan Bernofsky
At-Large
Columbia University

Alexis Levitin
At-Large
SUNY Plattsburgh

Erica Mena
Executive Director

Committees

Executive Committee

Chair: Russell Valentino, President
Vice Chair: Aron Aji, Vice President
Members: Paul Daw, Sean Cotter, Erica Mena

Finance Committee

Chair: Aron Aji, Vice President
Vice Chair: Paul Daw, Treasurer
Members: Esther Allen, Robin Davidson, Gary Racz

Development Committee

Chair: Esther Allen
Members: Marian Schwartz, Susan Harris, Paul Daw, Olivia Sears

Annual Fund Committee

Chair: Robin Davidson
Members: Lynn Hoggard, Mira Rosenthal

Endowment Committee

Chair: Paul Daw
Members: John Biguenet, Ed Morin, Jim Hoggard, Adam Sorkin

Program Committee

Chair: Allison Charette
Vice Chair: Erica Mena

Conference Committee

Chair: Chad Post
Members: Susan Bernofsky, Aviya Kushner, Cathy Nelson, Diana Thow (2016 local chair), Barbara Paschke (2016 local chair), Ezra Fitz, Nancy Naomi Carlson, Marian Schwartz (2018 local chair)

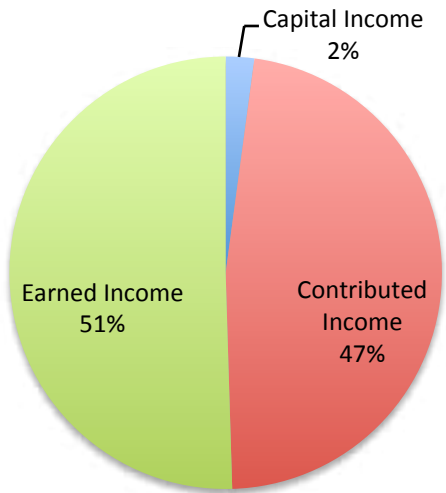
Advocacy Committee

Chair: Jeffrey Ankrom
Members: Katie Silver, Anna Rosenwong, Karen Emmerich, Alex Zucker, Niloufar Talebi, Jen Zoble, Allison Charette

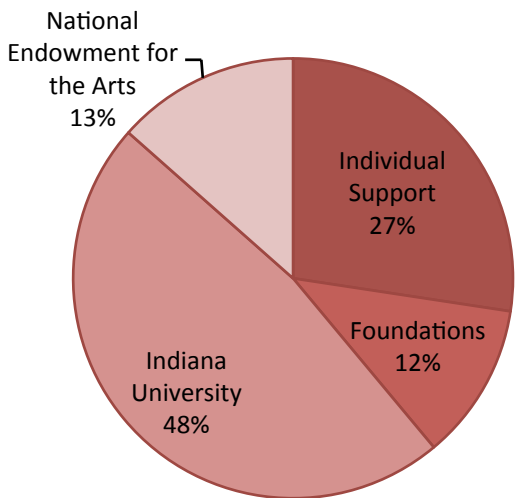
ALTA ENDOWMENT PERFORMANCE REPORT

	Full Year 2015	Full Year 2014	Full Year 2013	Full Year 2012
Beginning Balance	\$432,718	\$391,812	\$324,058	\$284,874
Interest & Dividends	\$17,457	\$19,484	\$12,091	\$9,170
Cap. Appreciation	(\$22,785)	\$3,802	\$23,741	\$17,107
Fees & Expenses	(\$1,095)	(\$847)	(\$686)	(\$752)
Gifts Credited	\$16,426	\$18,468	\$32,607	\$13,660
Ending Balance	\$437,722	\$432,718	\$391,812	\$324,058
Withdrawal	(\$5,000)	0	0	0
Change in Value Including Gifts/Withdrawal	\$5,004	\$40,906	\$67,754	\$39,185
Percentage Change Including Gifts/Withdrawal	1.2%	10.4%	20.9%	13.8%
Change in Value Excluding Gifts/Withdrawal	(\$6,422)	\$22,439	\$35,147	\$25,525
Percentage Change Excluding Gifts/Withdrawal	(1.5%)	5.7%	10.8%	9.0%

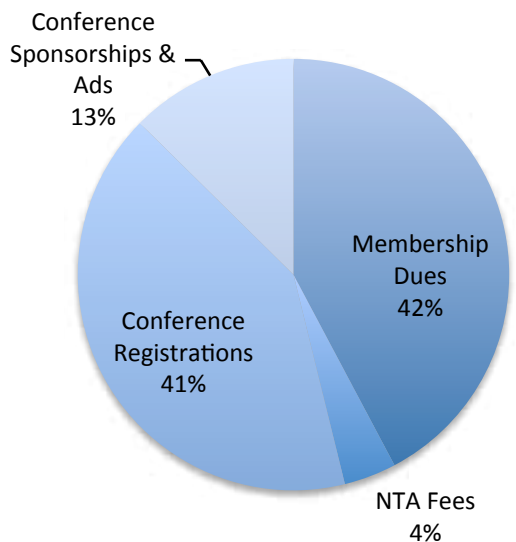
TOTAL REVENUE



CONTRIBUTED INCOME



EARNED INCOME



REVENUES & SUPPORT

Capital Income

Endowment Distribution \$5,000

Contributed Income

Individual Support \$30,515
 Foundations \$12,858
 Indiana University Support \$53,000
 National Endowment for the Arts \$15,000
Total Contributed Income \$111,373

Earned Income

Membership Dues \$50,116
 NTA Submission Fees \$4,655
 Conference Registrations \$48,899
 Conference Sponsorships & Ads \$14,968
Total Earned Income \$118,645

TOTAL REVENUE

\$235,019

EXPENSES

Personnel

Executive Director \$66,064
 Professional Services \$59,411

Program Services

Annual Conference \$67,604
 Awards \$35,241

Other Expenses

Office Admin \$6,967
 Travel \$10,040
 Business Expenses \$2,369

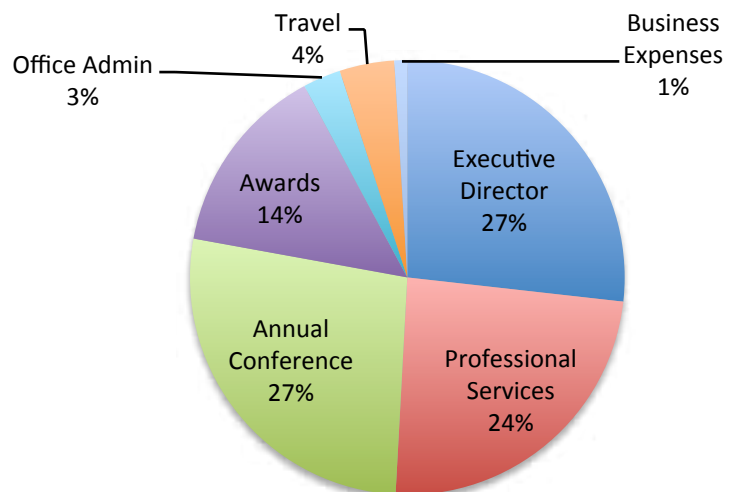
TOTAL EXPENSES

\$247,157

2015 DEFECIT

-\$12,138

EXPENSES



WWW.LITERARYTRANSLATORS.ORG